



GS1 Logistics Forum Overview

Heide Buhl, GS1 Germany GmbH

The global language of business

www.gs1.org



GS1 Logistics Forum

GS1 Logistics Forum

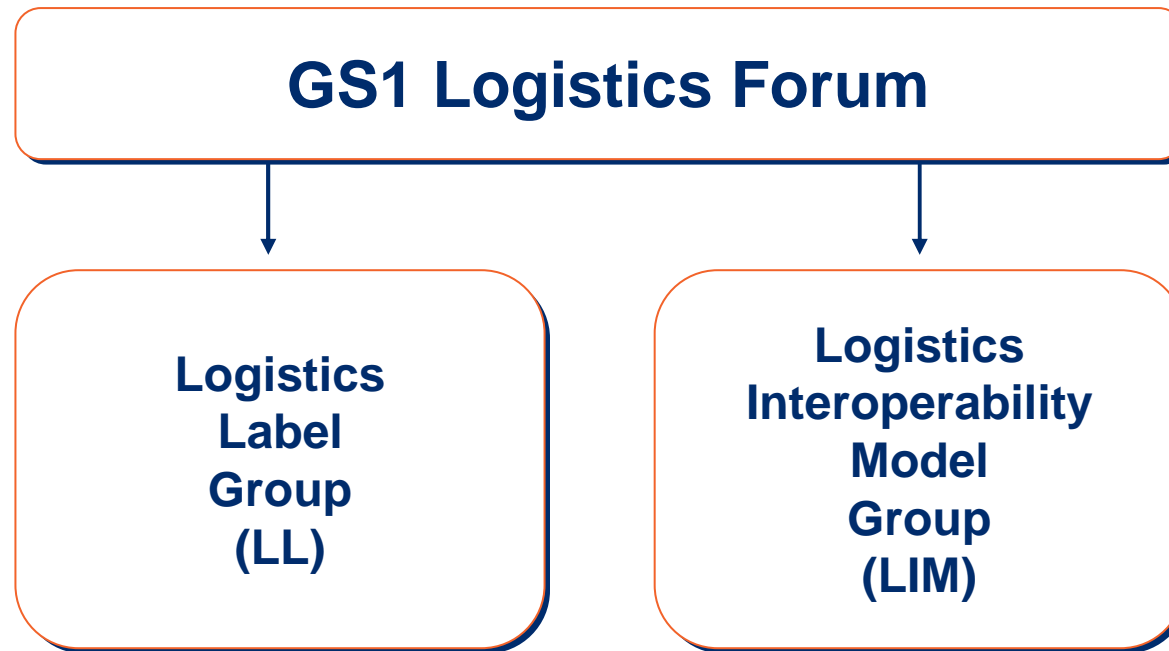


- A voluntary group of GS1 members and invited supply chain participants
- Led by the industry, facilitated by GS1
- Meetings are governed by agenda; minutes are distributed afterwards
- Hosts work groups which aim to enhance ability of all industry members to compete more efficiently and effectively
- Recommendations coming out of committees or work groups are just that. Companies remain free to make independent decisions
- Any standards developed are voluntary standards





GS1 Logistics Forum: *Structure & Mission*



Mission:

Lead the development and drive the implementation of the GS1 Logistics Solutions to achieve business benefits for global supply chains by fostering **supply chain interoperability** and **visibility of operations**.





The GS1 Logistics Forum

“The work done by the GS1 Logistics Forum is essential and needs to increase in the future. Logistics companies are playing more and more a vital role, not only in the launch of products and in the supply chain on a day-to-day basis; but also in out-of-stock and out-of-order management. **The GS1 Logistics Forum creates a place to discuss the issues** from our side and to bring attention to what needs to be done on both sides. ”



Bernd Flickinger
Chief Operating Officer
DHL Solutions





The GS1 Logistics Forum *Organisation*

Leadership Team

- Unilever
- DHL Exel
- GEFCO
- GS1 Netherlands
- GS1 France
- GS1 GO
- VICS

GS1 Logistics Forum Members

Companies:

Amigon, Alpha Group: Karlheinz Mevissen
Coca Cola: Sylviane Hauser
DHL Exel Supply Chain: Andreas Kruse
Firmenich: Guillaume Lecomte
FM Logistics: Eric Siebering
Henkel: Uwe Wiese
GEFCO: Jean Marc Ors
Geodis: Sylvie Michaud
Metro MGL: Reiner Ebling
Procter & Gamble: Jennifer Bragg
Schenker: Sven Hansen
SmurfitKappa Group: Margreet Rookmaker
Unilever: Fred Kempkes
VOS Logistics: Jos Quiryne

GS1 MO's:

GS1 EPCglobal: Bruno Julien
GS1 France: Isabelle Chatagnier
GS1 Germany: Heide Buhl
GS1 GO: Michel van der Heijden
GS1 GO: Yuliya Shevchenko
GS1 Netherlands: Gerard Lamers
GS1 Netherlands: Marco Van der Lee
GS1 Norway: Knut Vala

Associations:

ESCLA: Carole Prier
VICS: Joe Andraski





The GS1 Logistics Forum *Plenary Group*

GS1 Logistics Forum – Plenary Group



- The work packages for the LIM and LL subgroups are presented and approved
- Both subgroups provide update on the project progress
- The results of subgroups are validated
- Updates on relevant Transport & Logistics projects and topics
 - ✓ EPC TLS BAG
 - ✓ VICS Logistics Projects
- Introduces new topics in T&L sector for the subgroups





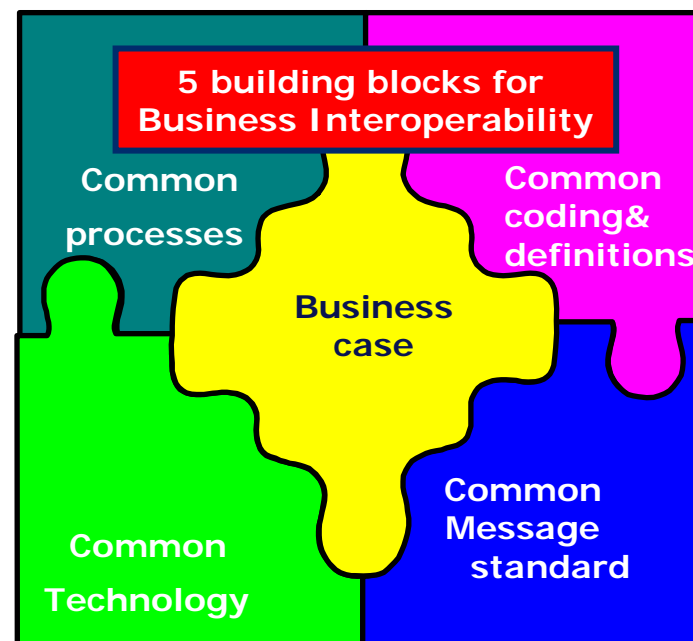
Logistics Interoperability Model (LIM) Group

Development of **framework of common business processes** and related **data communication interchanges** and **driving alignment** on all levels of the interoperations in **Transport and Warehousing** from master data alignment to financial settlement

Fits with 2016 GCI Vision report

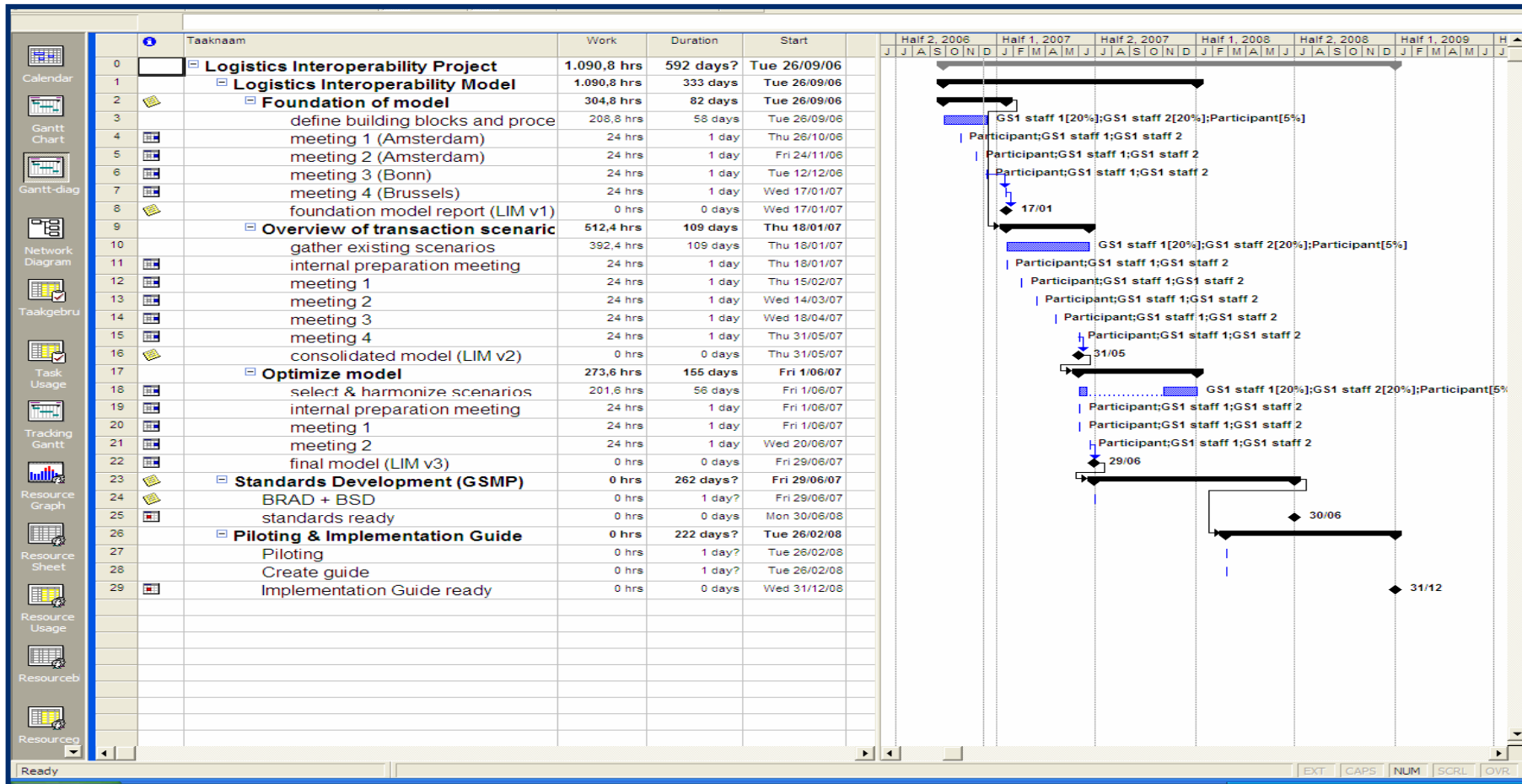
The LIM is based on five building blocks:

- Common processes
- Common technology
- Common coding & definitions
- Common message standard
- Business case





The Logistics Interoperability Model Workgroup Planning





The Logistics Label Workgroup *within the GS1 Logistics Forum*

Logistics Label Group – Project Objectives



- Use **common logistics label** to increase efficiency in the supply chain
- Ensure systematic tracking and tracing to **reduce delivery time** and **augment service levels**
- **Work with key partners** in the supply chain to harmonize and simplify **procedures with carriers** using the global standards
- Promote the use of GS1 logistics label in **trade** and **transportation**



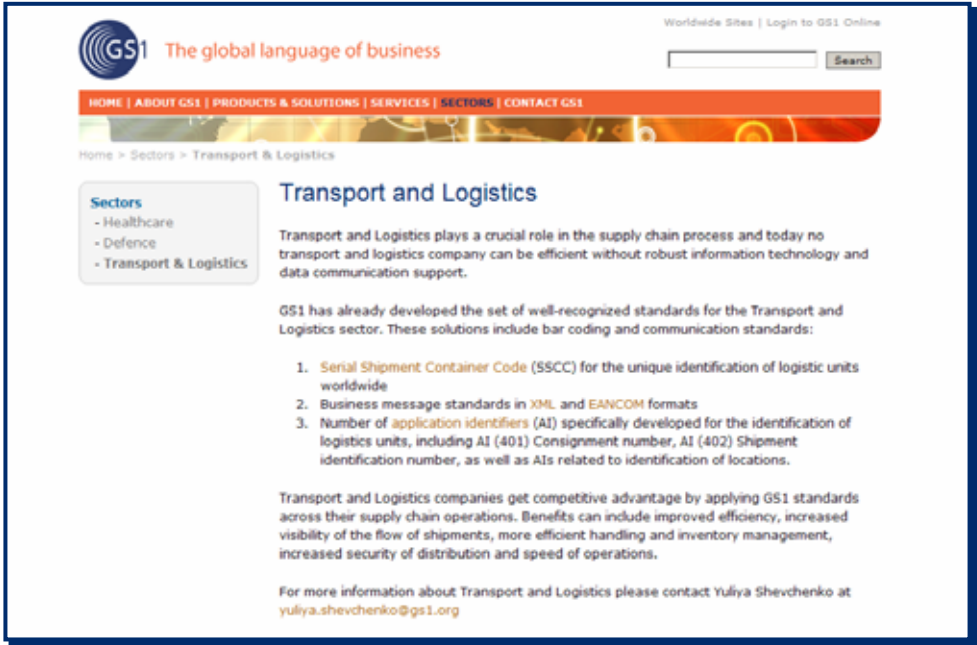


Logistics Label Group – Deliverables

- Develop recommendation on common **transport information** on the GS1 logistics
- Develop **the best practice guideline** on use of the GS1 Logistics Label in transport and warehousing based on recommendation in the general specification and HELL (Harmonisation European Logistic Label)



All information and updates are at GS1 Transport & Logistics website



Log onto our **web site** to learn more about initiatives in the sector and to join working groups.

www.gs1.org/sectors/transportlogistics





Questions ?

Please contact:

GS1 Germany GmbH
Heide Buhl
Buhl@gs1-germany.de

