



The Global Language of Business

GS1 DQX Upload Tool Manual

Version 1.4, Mar 2025

Document Summary

Document Item	Current Value
Document Name	GS1 DQX Upload Tool Manual
Document Date	March, 2025
Document Version	1.4
Document Status	English first edition
Document Description	Description of the provision of product images/artwork via the GS1 DQX Upload Tool

Disclaimer

GS1®, under its IP Policy, seeks to avoid uncertainty regarding intellectual property claims by requiring the participants in the Work Group that developed this document to agree to grant to GS1 members a royalty-free licence or a FRAND licence to Necessary Claims, as that term is defined in the GS1 IP Policy. Furthermore, attention is drawn to the possibility that an implementation of one or more features of this Specification may be the subject of a patent or other intellectual property right that does not involve a Necessary Claim. Any such patent or other intellectual property right is not subject to the licencing obligations of GS1. Moreover, the agreement to grant licences provided under the GS1 IP Policy does not include IP rights and any claims of third parties who were not participants in the Work Group.

Accordingly, GS1 recommends that any organization developing an implementation designed to be in conformance with this Specification should determine whether there are any patents that may encompass a specific implementation that the organisation is developing in compliance with the Specification and whether a licence under a patent or other intellectual property right is needed. Such a determination of a need for licencing should be made in view of the details of the specific system designed by the organisation in consultation with their own patent counsel.

THIS DOCUMENT IS PROVIDED "AS IS" WITH NO WARRANTIES WHATSOEVER, INCLUDING ANY WARRANTY OF MERCHANTABILITY, NONINFRINGEMENT, FITNESS FOR PARTICULAR PURPOSE, OR ANY WARRANTY OTHERWISE ARISING OUT OF THIS SPECIFICATION. GS1 disclaims all liability for any damages arising from use or misuse of this Standard, whether special, indirect, consequential, or compensatory damages, and including liability for infringement of any intellectual property rights, relating to use of information in or reliance upon this document.

GS1 retains the right to make changes to this document at any time, without notice. GS1 makes no warranty for the use of this document and assumes no responsibility for any errors which may appear in the document, nor does it make a commitment to update the information contained herein.

GS1 and the GS1 logo are registered trademarks of GS1 AISBL.

Table of Contents

1	General information and purpose of the guide.....	4
2	Provision of product images/artwork via the GS1 DQX Upload Tool	5
	Contact.....	11
	Imprint	11

1 General information and purpose of the guide

In this guide you will find instructions on how to use the GS1 DQX Upload Tool for your GS1 DQX operation to provide product images/artwork of your products for the visual validation process.

- At GTIN level, you have the option to choose whether you want to use this delivery route or the standard route via GDSN.
- Mixing supply channels for one GTIN is **not** possible. If product images/artwork via the GS1 DQX Upload Tool are available, **only** these will be used for the visual validation.
- The product images/artwork provided via the GS1 DQX Upload Tool are provided exclusively to GS1 DQX and only for the purpose of visual validation. **These files are never dispatched to other data recipients.**
- The maximum file size must not exceed 10 MB.

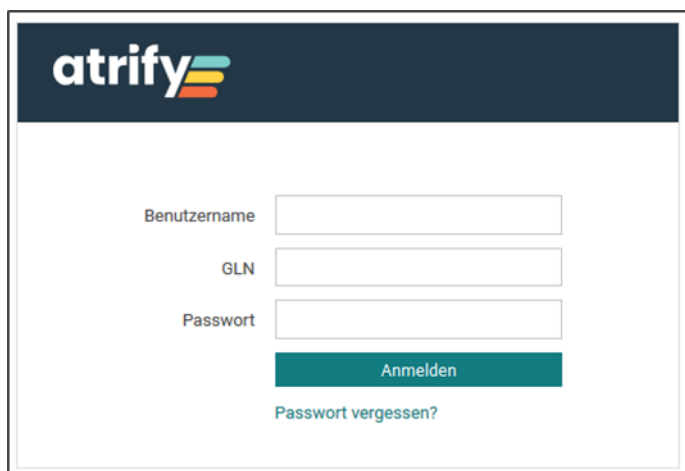
Follow these steps to gain access to the GS1 DQX Upload Tool:

- Please contact the GS1 DQX Support via e-mail and include your GLN: dqx-support@gs1.de.
- Please contact the GS1 DQX Support by phone: +49 (0) 221 94714-690.

Follow these steps to open the GS1 DQX Upload Tool:

- Go to the following internet address: <https://dqq-katalog.atrify.com/approval/auth/index.do>

Follow these steps to log in to the GS1 DQX Upload Tool:



The screenshot shows the login interface of the atrify system. At the top, the 'atrify' logo is displayed. Below it, there are three input fields labeled 'Benutzername', 'GLN', and 'Passwort'. A teal button labeled 'Anmelden' is positioned below the password field. At the bottom, there is a link that says 'Passwort vergessen?'.

- Enter your login information
 - Username
 - GLN
 - Password
- Then click on "Log in"

2 Provision of product images/artwork via the GS1 DQX Upload Tool

Follow these steps to upload product images or artwork of your items via the GS1 DQX Upload Tool:

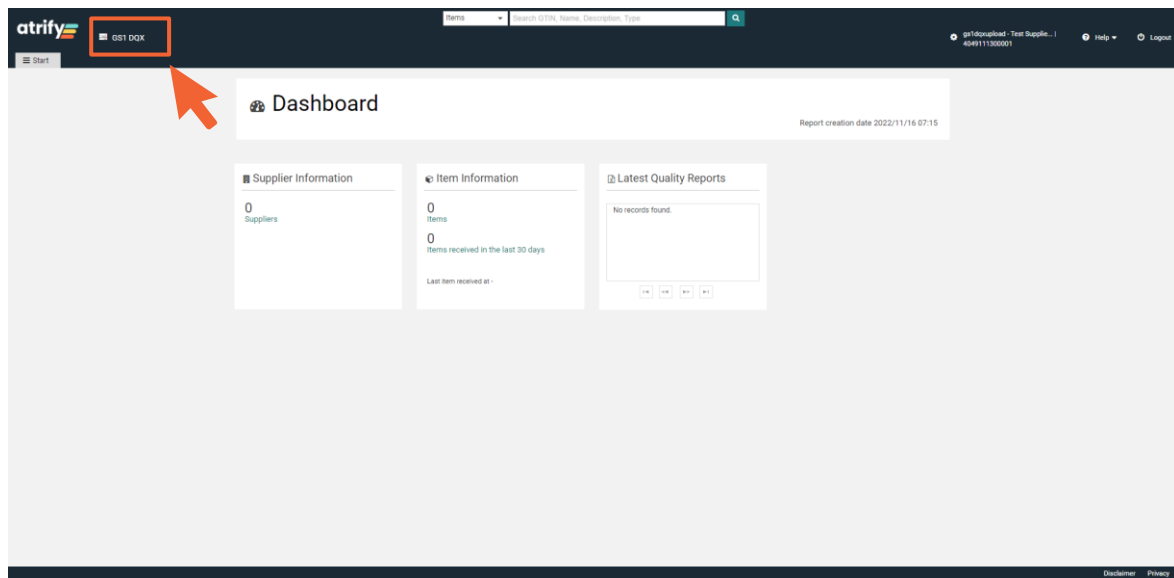
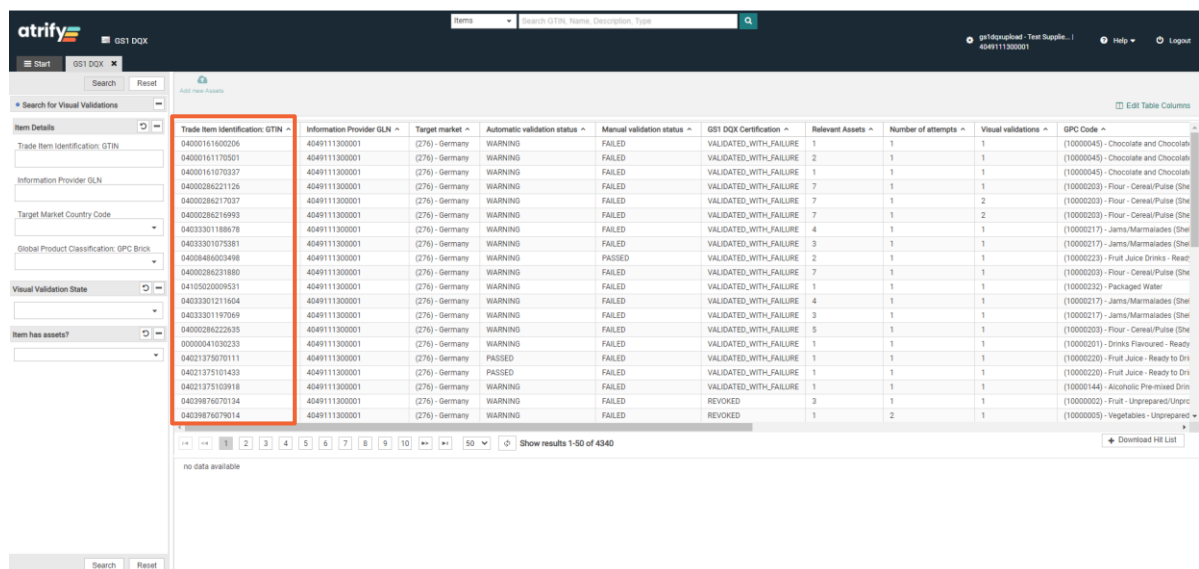


Figure 2 - 1: Dashboard

To access the overview of your published articles, open your GS1 DQX list.

- Click on GS1 DQX and then on "Search".



Trade Item Identification: GTIN	Information Provider GLN	Target market	Automatic validation status	Manual validation status	GS1 DQX Certification	Relevant Assets	Number of attempts	Visual validations	GPC Code
040001600026	4049111300001	(276) - Germany	WARNING	FAILED	VALIDATED_WITH_FAILURE	1	1	1	(1000045) - Chocolate and Chocolat
0400016100001	4049111300001	(276) - Germany	WARNING	FAILED	VALIDATED_WITH_FAILURE	2	1	1	(1000045) - Chocolate and Chocolat
0400016100002	4049111300001	(276) - Germany	WARNING	FAILED	VALIDATED_WITH_FAILURE	1	1	1	(1000045) - Chocolate and Chocolat
0400028621125	4049111300001	(276) - Germany	WARNING	FAILED	VALIDATED_WITH_FAILURE	7	1	1	(10000203) - Flour - Cereal/Pulse (Sh
04000286217037	4049111300001	(276) - Germany	WARNING	FAILED	VALIDATED_WITH_FAILURE	7	1	2	(10000203) - Flour - Cereal/Pulse (Sh
04000286216993	4049111300001	(276) - Germany	WARNING	FAILED	VALIDATED_WITH_FAILURE	7	1	2	(10000203) - Flour - Cereal/Pulse (Sh
0403330188678	4049111300001	(276) - Germany	WARNING	FAILED	VALIDATED_WITH_FAILURE	4	1	1	(10000217) - Jams/Marmalades (Shel
04033301875381	4049111300001	(276) - Germany	WARNING	FAILED	VALIDATED_WITH_FAILURE	3	1	1	(10000217) - Jams/Marmalades (Shel
04008486003498	4049111300001	(276) - Germany	WARNING	PASSED	VALIDATED_WITH_FAILURE	2	1	1	(10000223) - Fruit Juice Drinks - Read
0400028621880	4049111300001	(276) - Germany	WARNING	FAILED	VALIDATED_WITH_FAILURE	7	1	1	(10000203) - Flour - Cereal/Pulse (Sh
0410020000531	4049111300001	(276) - Germany	WARNING	FAILED	VALIDATED_WITH_FAILURE	1	1	1	(10000222) - Packaged Water
04033301211604	4049111300001	(276) - Germany	WARNING	FAILED	VALIDATED_WITH_FAILURE	4	1	1	(10000217) - Jams/Marmalades (Shel
04033301197069	4049111300001	(276) - Germany	WARNING	FAILED	VALIDATED_WITH_FAILURE	3	1	1	(10000217) - Jams/Marmalades (Shel
04000286222635	4049111300001	(276) - Germany	WARNING	FAILED	VALIDATED_WITH_FAILURE	5	1	1	(10000203) - Flour - Cereal/Pulse (Sh
0000041030233	4049111300001	(276) - Germany	WARNING	FAILED	VALIDATED_WITH_FAILURE	1	1	1	(10000220) - Drinks Flavour - Ready
04021375070111	4049111300001	(276) - Germany	PASSED	FAILED	VALIDATED_WITH_FAILURE	1	1	1	(10000220) - Drinks Flavour - Ready
04021375101433	4049111300001	(276) - Germany	PASSED	FAILED	VALIDATED_WITH_FAILURE	1	1	1	(10000220) - Drinks Flavour - Ready
04021375103918	4049111300001	(276) - Germany	WARNING	FAILED	VALIDATED_WITH_FAILURE	1	1	1	(10000144) - Alcoholic Pre-mixed Drin
0403967670134	4049111300001	(276) - Germany	WARNING	FAILED	REVOKED	3	1	1	(10000002) - Fruit - Unprepared/Unpre
04039676707014	4049111300001	(276) - Germany	WARNING	FAILED	REVOKED	1	2	1	(10000005) - Vegetables - Unprepared

Figure 2 - 2: GS1 DQX list

All GTINs published by your GLN to GS1 DQX appear in the list.

Stock items, that is, articles that were sent in the initial load and are currently NOT_RELEVANT, are hidden by default.

You have the possibility to directly select a GTIN to which you want to add product images or artwork.

- To do this, click on the GTIN.

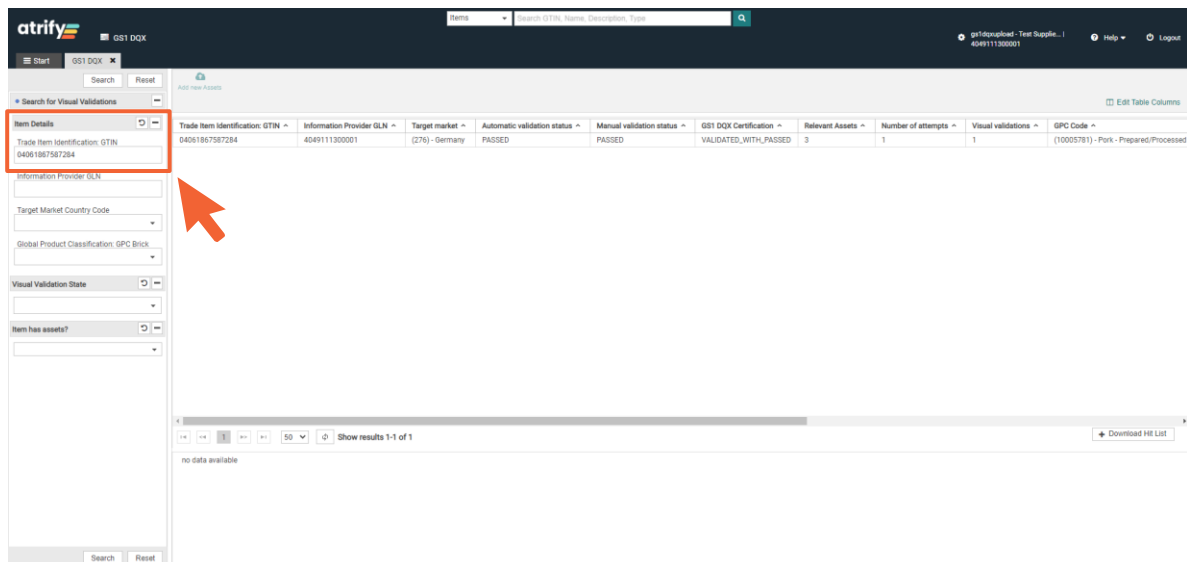


Figure 2 - 3: GTIN search

You have the possibility to search for a GTIN.

- To do this, enter a GTIN in the search bar (left).

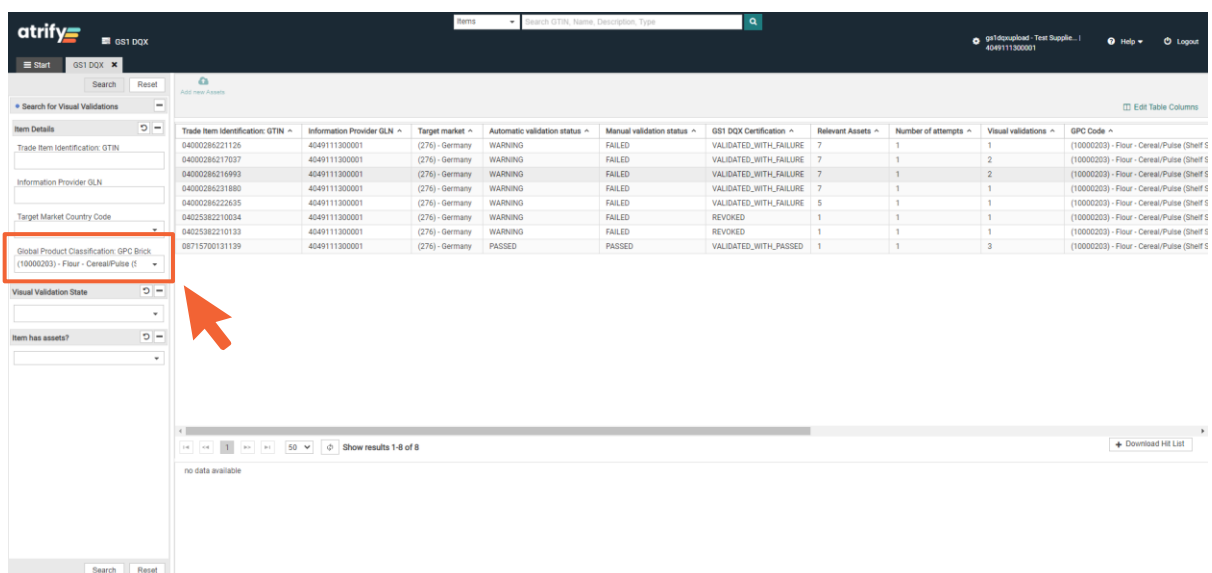


Figure 2 - 4: GPC search

You have the possibility to filter your GTINs by GPC Brick to simplify your search.

- Set the following filter (left): "Global Product Classification: GPC Brick".

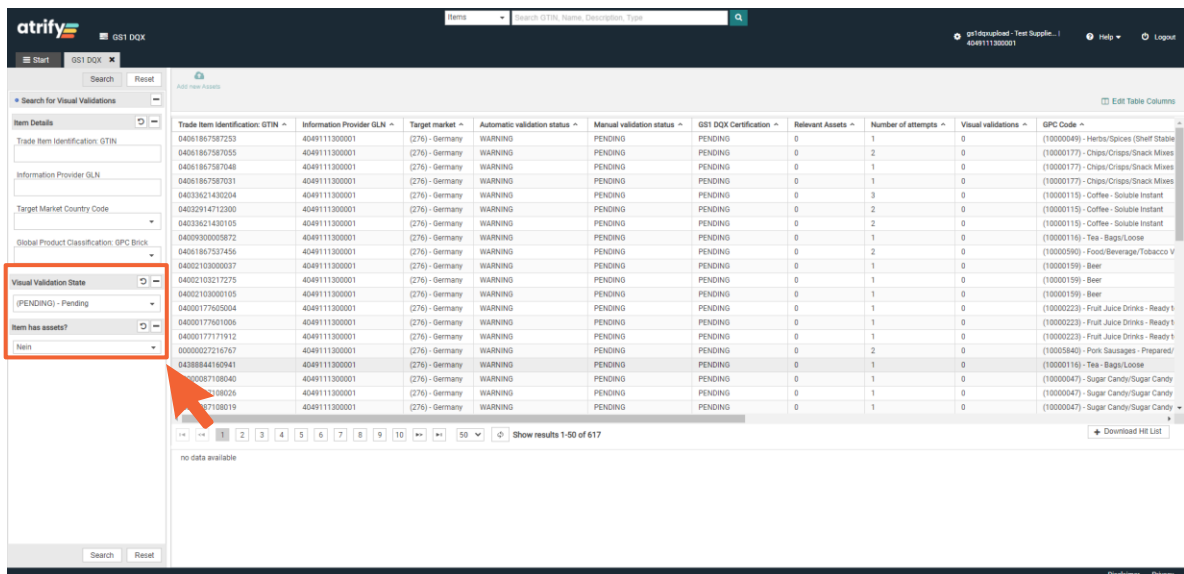


Figure 2 - 5: Set filter

You have another option to filter your GTINs to simplify the search for GTINs with the visual validation status PENDING and without digital attachments.

- To do this, set the following filter (left): "Visual validation state"¹ & "Item has assets?".

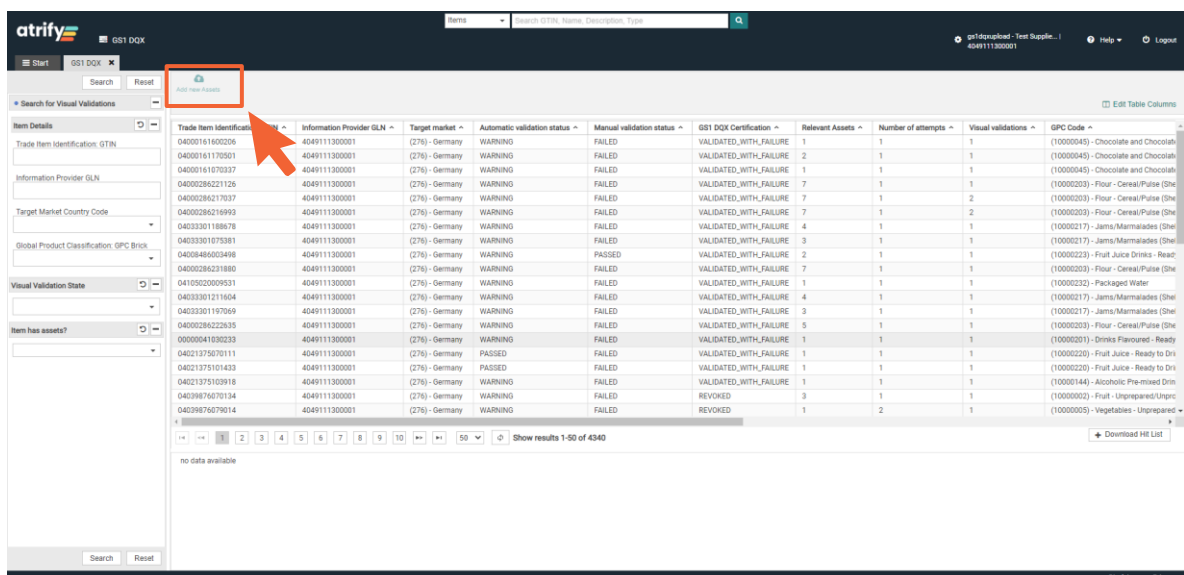


Figure 2 - 6: Add product images/artwork

Once a GTIN has been selected in your overview, you can add product images or artwork to it.

- Then click on "Add new assets".

¹ Here you also have the option of filtering for stock items (NOT_RELEVANT).

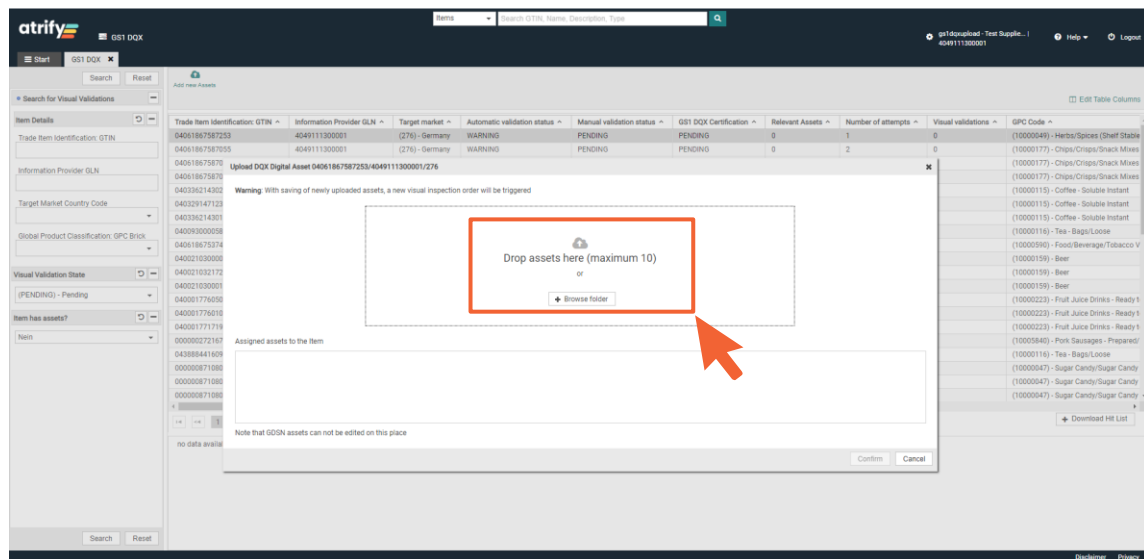


Figure 2 - 7: Upload dialog

Clicking on "Add new assets" will open an upload dialog window.

- Load product images or artwork via Drag&Drop into the dialog window or
- Open the folder view by clicking on "Browse folder".

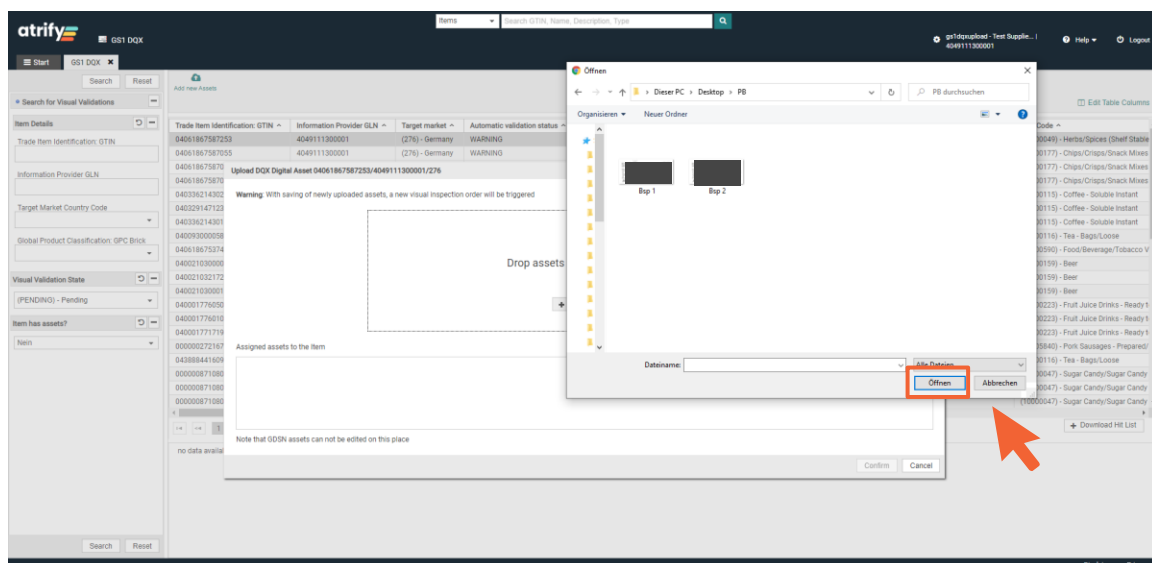


Figure 2 - 8: Add product images/artwork

With your click on "Browse folder" the personal folder structure of your computer will be opened.

- Select the relevant product images or artwork and click "Open".

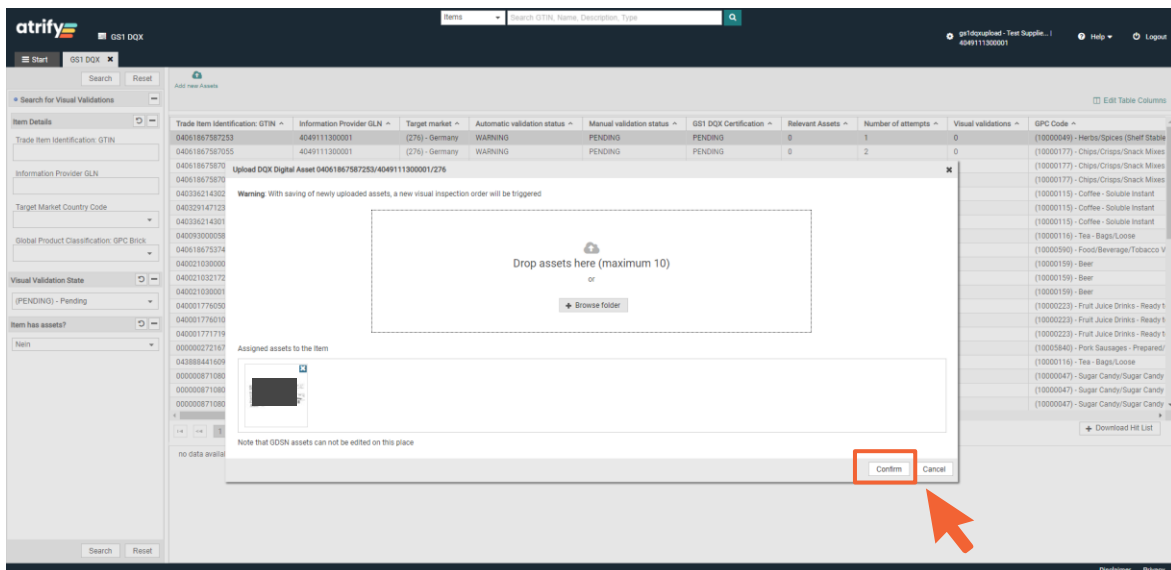


Figure 2 - 9: Confirm upload

Once the selection of the product images or artwork is complete, confirm this.

- To do this, click on "Confirm".

Your click triggers a visual validation.

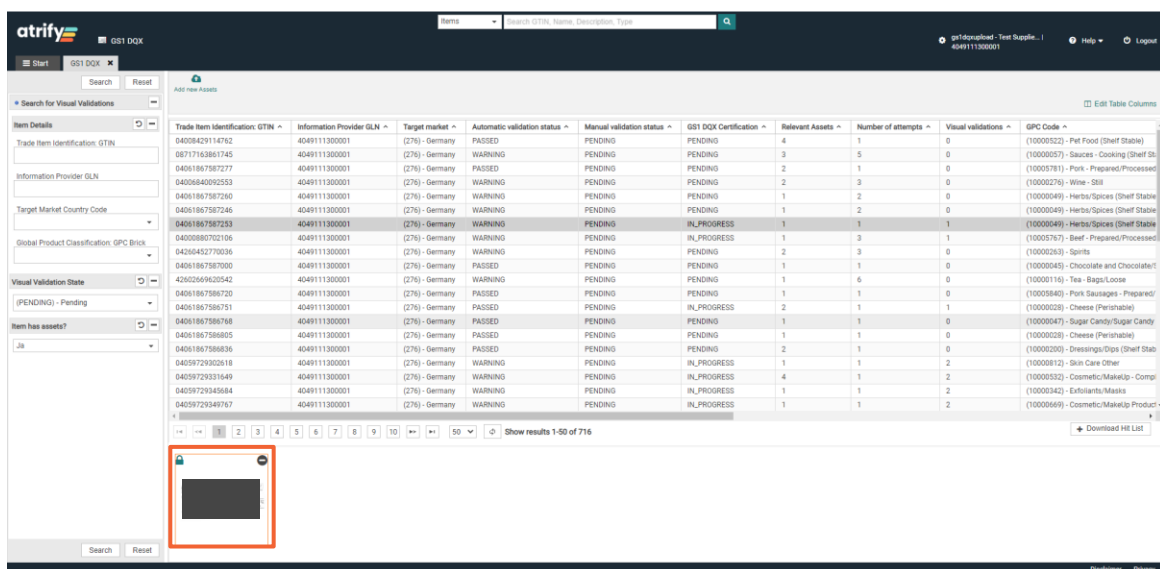


Figure 2 - 10: GS1 DQX list - GTIN with product image

The product images or artwork are now displayed as part of the GTIN.

Follow these steps to change your personal user settings:

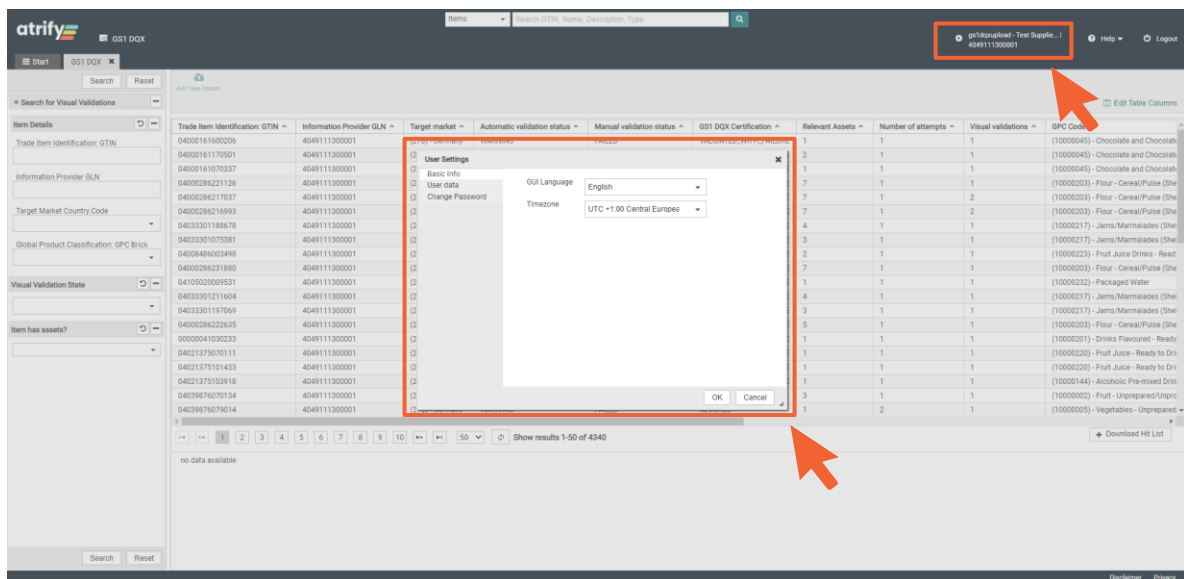


Figure 2 - 11: Change user settings

You have the possibility to manage your user settings.

This includes the language and time zone settings as well as your password.

- Click on your name and GLN in the upper right corner to enter the user settings.
- Then set your personal settings.
- Confirm this by clicking on "OK".

Contact

GS1 Germany GmbH
DQX Support

Tel: +49 (0)221 94714-690

Email: dqx-support@gs1.de

Homepage: www.gs1.de/dqx

Imprint

Publisher:
GS1 Germany GmbH

Executive Director:
Thomas Fell

GS1 Germany GmbH
Stolberger Str. 108 a, 50933 Köln, Germany

PO Box 30 02 51
D-50772 Cologne

Tel: +49 (0)221 94714-0
Fax: +49 (0)221 94714-990

Email: info@gs1.de
Homepage: www.gs1.de

© GS1 Germany GmbH, Cologne